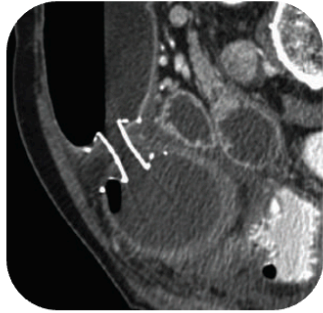
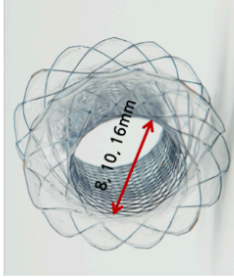
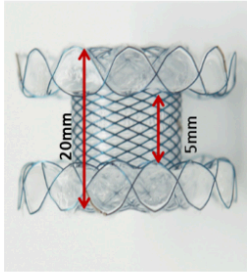
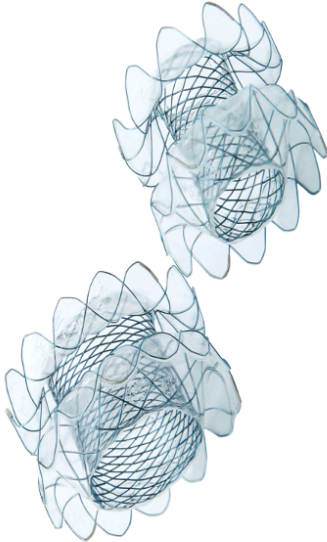


HOT SPAXUS™ Stent



HOT SPAXUS Stent: EUS Stent for Drainage of Pancreatic Fluid collection or Gallbladder through the lumen apposition approach.

- **Features: 10Fr.**
- **Lumen Opposing stent.**
- **Large flanges stop migration (15mm larger than body).**
- **Optimal Radial Force.**
- **Remove between 3 to 4 weeks.**
- **Radiopaque Markers: 3 at flares and 2 in the middle.**

Approach	Code	Stent		Delivery System	
		Diameter	Length	Diameter	Length
		mm	cm	Fr	cm
Endoscopic	HSS**--FW	8, 10, 16	2	10Fr	180

- stento viduryje turi būti ≥ 2 , o abiejuose stento galuose turi būti po ≥ 3 rentgenokontrastinius žymenis, kurie yra kontrastingesni negu stento nitinolinis ar lygiavertis karkasas